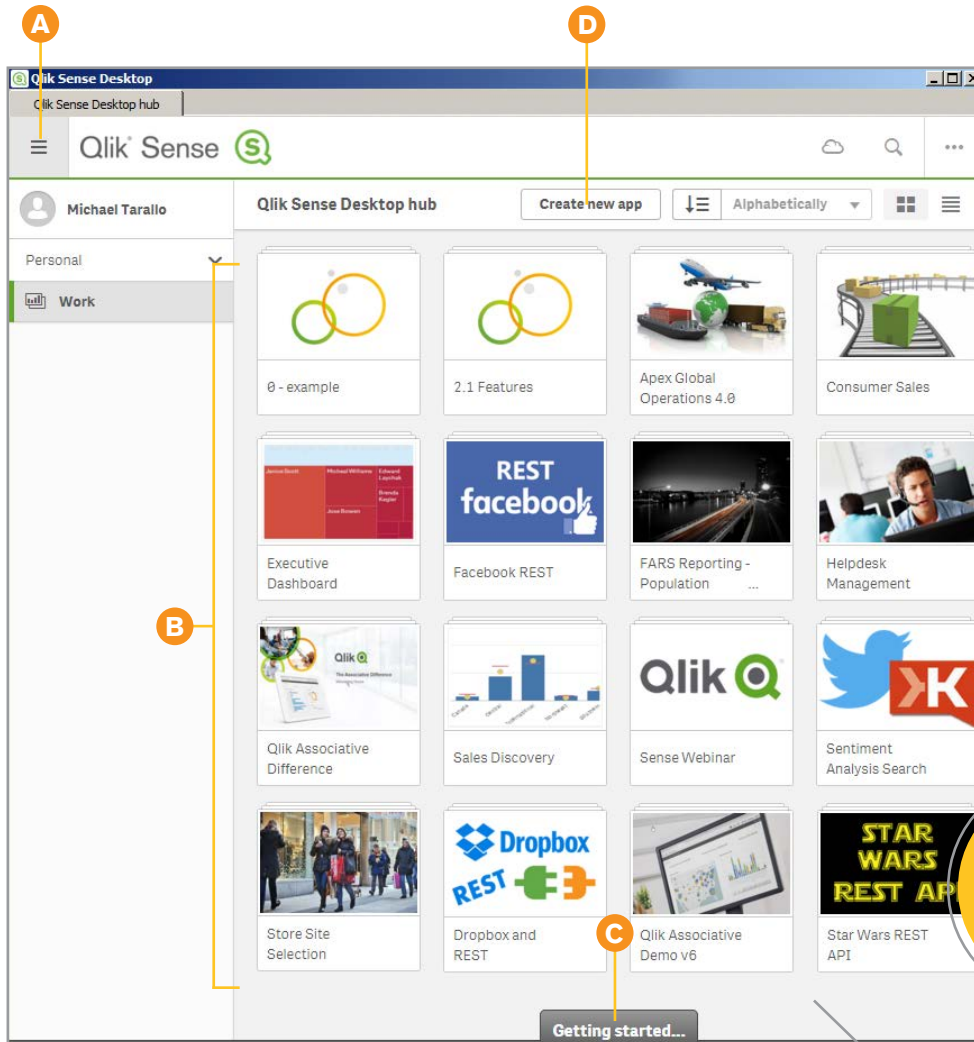


## Orientation



### The Desktop Hub: Create New App

- A** Action Menu
- B** Apps
- C** Helpful Resources
- D** Create New App



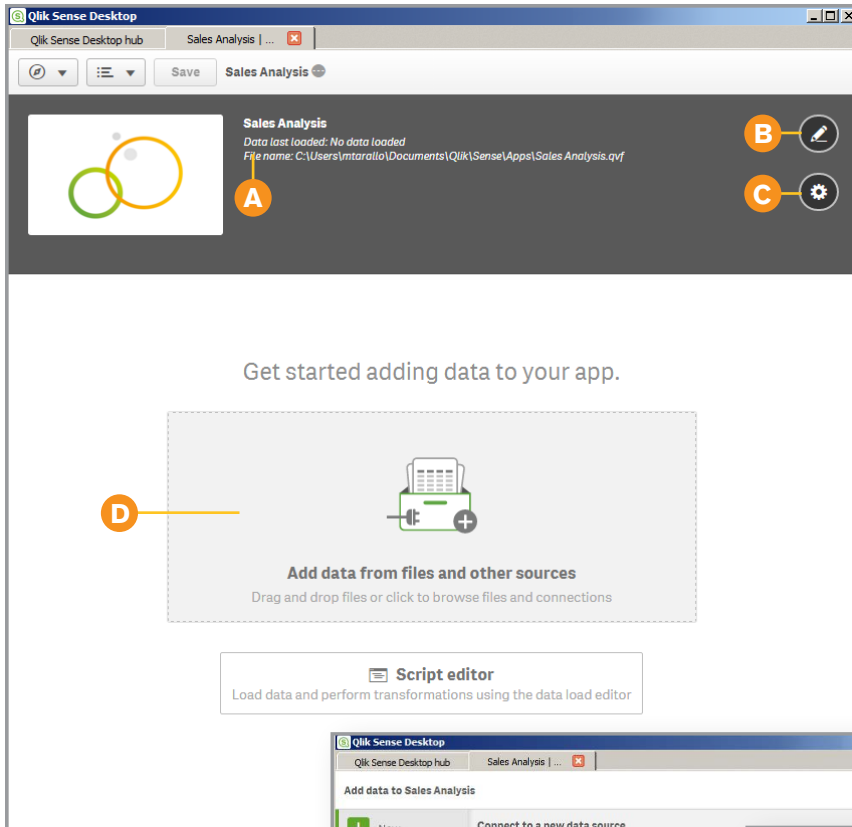
1. Click Create New app
2. Enter a name for the app
3. Click Create

**Create new app**

Name of my app:

**Cancel** **Create**

## Create new app: Add data window

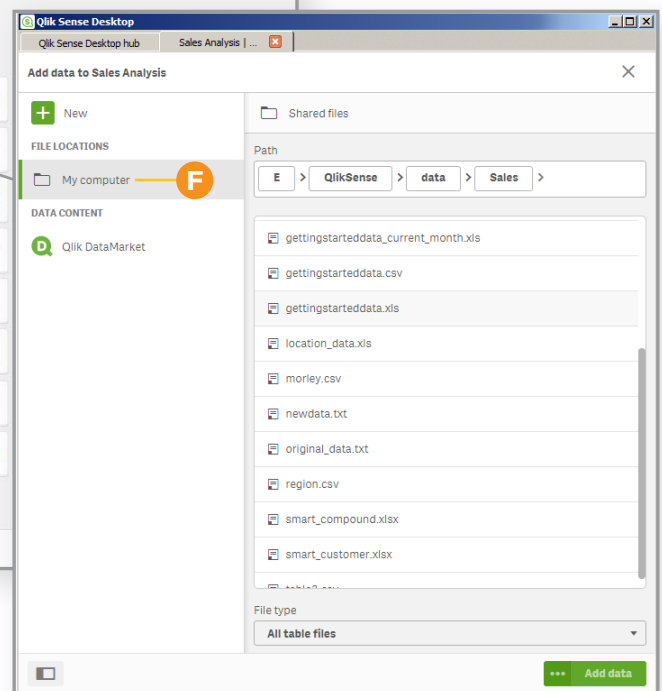
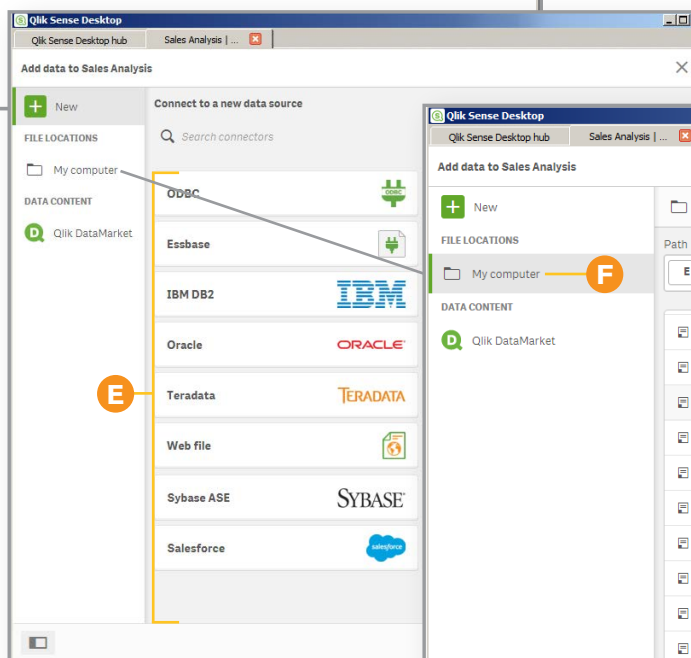


- A** Information Pane
- B** Edit Description and Thumbnail
- C** Edit Sheet Title Styling
- D** Add Data
- E** Additional connectors shown, database, files & more
- F** Excel

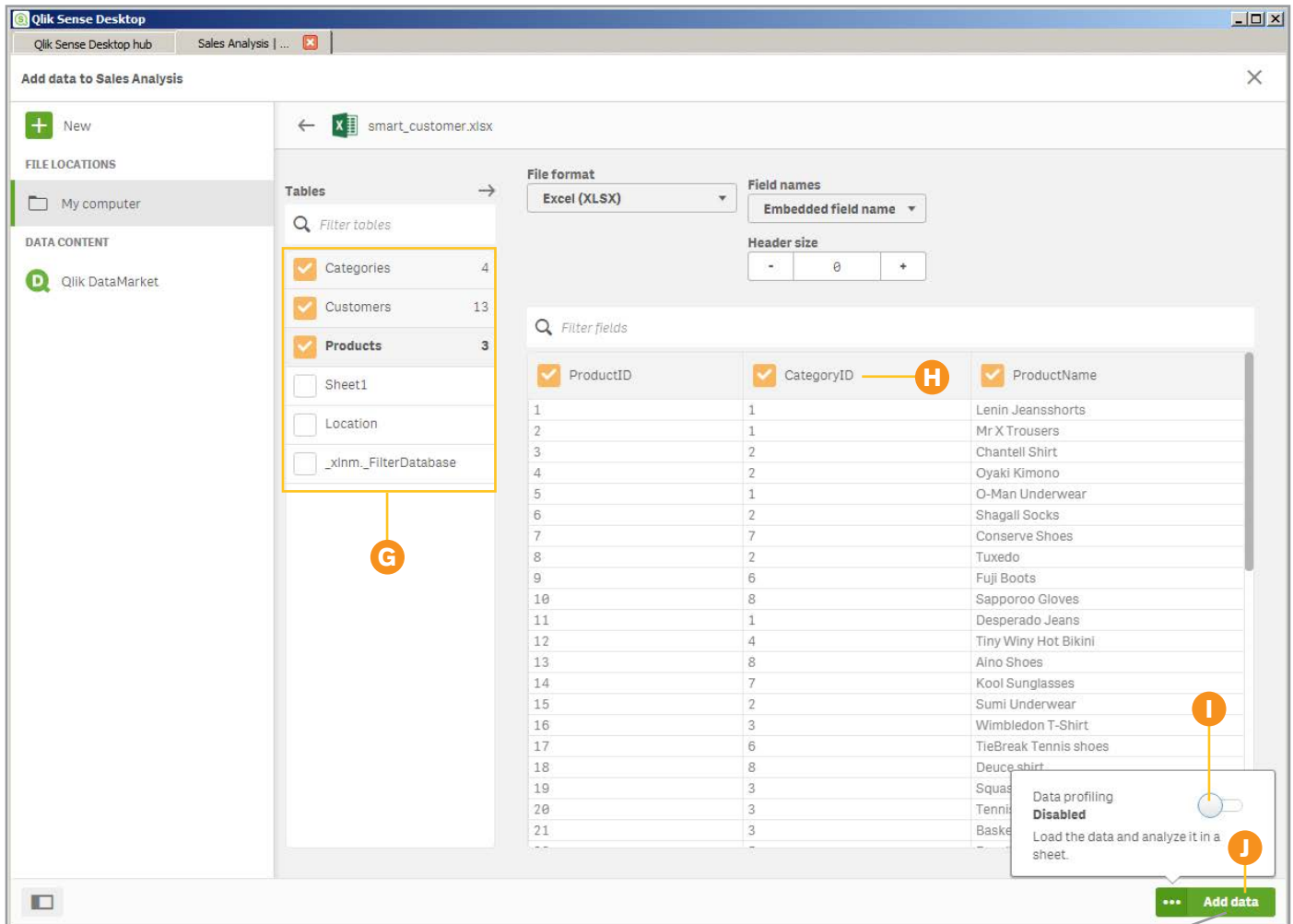
1. Click Add data – (Excel file)

2. Click Excel files

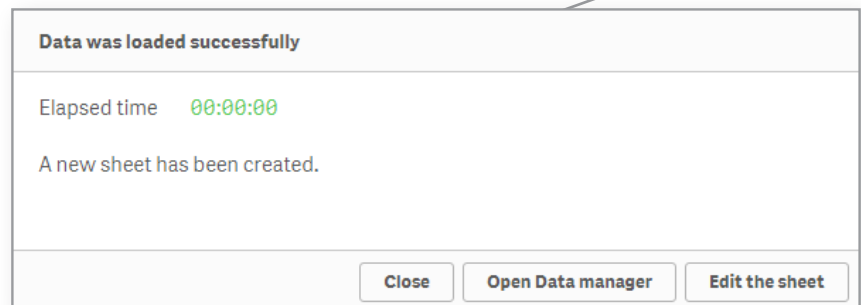
3. Browse and select .xls, .xlsx, .csv, .txt



## Create new app: Add data window



- G** Select tables
- H** Select or rename fields
- I** Disable Data Profiling
- J** Click Add Data



5. Select tables (worksheets)

6. Rename, select / deslect columns

7. Disable data profiling, click Add Data

8. Click Edit the sheet

## Create Visualizations

1. Enable edit mode (if needed)



2. Select a chart and drag it onto the canvas

3. Add a dimension

4. Add a measure

5. Adjust further using the adjustment pane if desired

6. Repeat for additional charts. Note, charts will automatically interact with each other

7. Select "Done" to exit edit mode

Country	2012	2013	2014
Argentina	\$618.18	\$7,113.26	\$2,621.63
Austria	\$78,121.88	\$13,652.82	\$17,693.79
Belgium	\$6,144.45	\$7,880.26	\$1,880.26
Brazil	\$2,089.59	\$71,985.79	\$31,238.63
Canada	\$3,213.01	\$16,643.32	\$26,642.63
Denmark	\$5,150.44	\$22,492.63	\$20,177.23
Finland	\$566.78	\$2,263.71	\$3,633.18
France	\$53,278.66	\$54,518.54	\$58,615.28
Germany	\$82,107.76	\$273,026.64	\$139,017.66

## Sharing Your Work

1. Locate .qvf file
2. In the Desktop Hub – Click desired app title to reveal location in the information pane
3. Email .qvf file as an attachment to other Qlik Sense Desktop users.

The screenshot shows the Qlik Sense Desktop Hub interface. At the top, there are several app tiles: Executive Dashboard, Helpdesk Management, Sense Cloud, Sales Analysis Point Map, Sales Discovery, and Sense Webinar. The Helpdesk Management app is selected, and its information pane is visible. The information pane shows the file name: C:\Users\mtarallo\Documents\Qlik\SenseApps\Helpdesk Management.qvf and the data last loaded: No data loaded. A yellow arrow labeled 'A' points to the information pane. Another yellow arrow labeled 'B' points to an email attachment named 'My App.qvf (144 KB)' in an email client window. The email is addressed to Michael Tarallo (mtarallo@exvressor-software.com) and contains the text: 'See attached Qlik Sense App', 'Regards, Michael Tarallo', and 'Sr. Technical Product Marketing Manager Qlik Sense Community Advocate'.

**A** Information Pane  
**B** Attached App

4. Upload Qlik Sense Desktop app (.qvf file) to Qlik Sense Cloud and share via invitation.

The 'New app' dialog box shows two options: 'Create app' and 'Upload an app'. The 'Create an app' section has a 'Title' input field and a 'Create app' button. The 'Share' dialog box shows a message: 'Anyone that you share your apps with will be able to see all of the apps that you have published to your Personal cloud stream.' Below the message is an 'Email' input field and two buttons: 'Cancel' and 'Share'.

## Additional Resources:

[Getting Started with Qlik Sense Webinar](#)

[Qlik Community: New to Qlik Sense](#)

[Qlik Sense How To Videos](#)  
[Qlik Sense: Get Started](#)

[Getting Started with Qlik Sense Cloud](#)

[Qlik Help Channel](#)